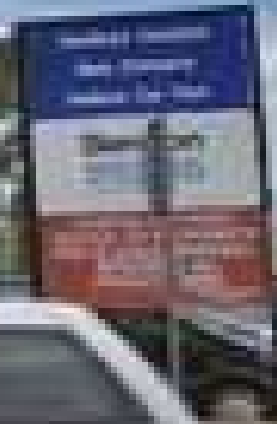
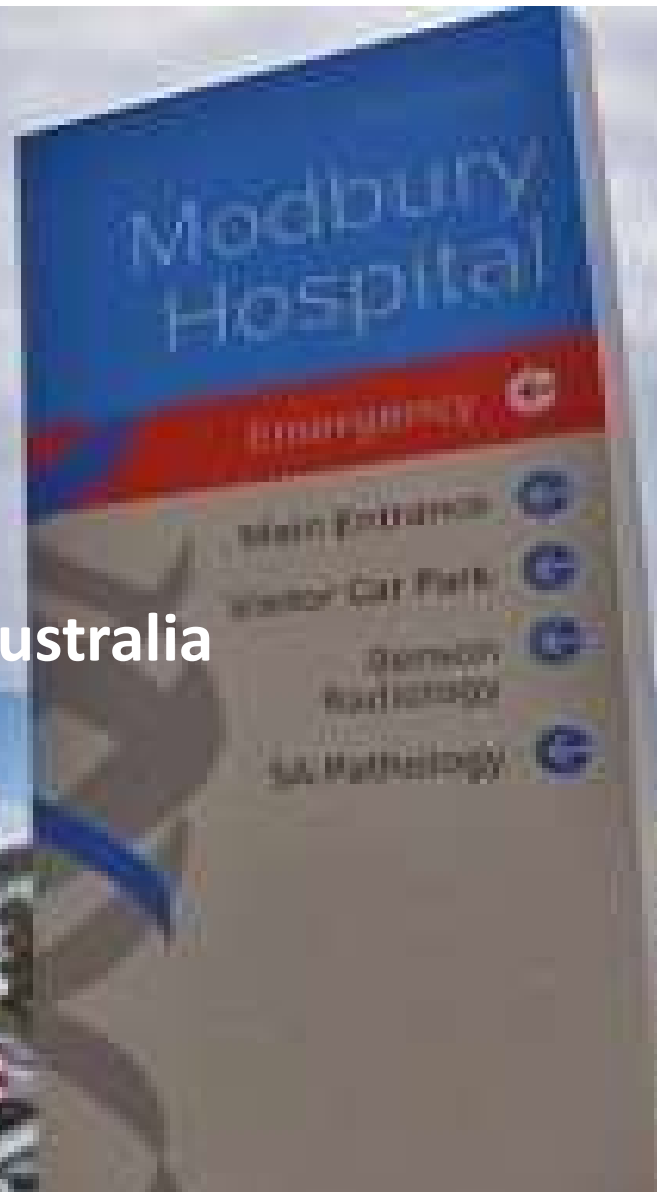


Navigating the public health system to enhance patient care

Wednesday 01 July, 2020

A joint Optometry Victoria South Australia
NALHN Event

STARTING AT 6PM ADELAIDE TIME



Welcome

Libby Boschen

Special Advisor – Member Services and Policy (South Australia)

Program overview

- Optometry Victoria South Australia update

- Navigating the public health system to enhance patient care:
 - Defining the problem and optometry's role in fixing it
 - Imaging and referral pathways
 - Medico-legal implications

WITH POLLING QUESTIONS AND ASSESSMENT QUESTIONS

- Summary, evaluation and close

Learning objectives

- Explain how the public health system works and summarise current challenges for optometrists.
- List the optometry-related factors that can contribute to improved patient care at Modbury Hospital.
- Describe the community optometrists' role in maximising both the effectiveness of the public health system and the quality/timeliness of patient care.
- Describe the expectations of SA Health & Modbury Hospital ophthalmologists with regards to which patients should be referred (and when) and what supporting diagnostic results and clinical information should be provided with the referral.
- Correctly interpret diagnostic imaging and manage patient care accordingly.
- Demonstrate understanding of the potential medico-legal implications arising from failing to deliver appropriate duty of care.

CPD attendance and assessment

- CPD attendance and assessment is through Elite CPD
- Go to elitecpd.optometry.org.au
- Log in is your member number e.g. MXXXXXX
- Password is your member password
 - ❖ This is the password used to access the OA website and member portal
- Choose **Navigating the public health system to enhance patient care**
- Click on blue box to the right with the arrow, then click on the black and white PEN icon on right to record attendance, questions then appear

Optometry Victoria South Australia update

COVID-19 pandemic

www.optometry.org.au/practice-professional-support/coronavirus-covid-19-what-optometrists-need-to-know/

- Infection control principles
- Clinical advice including strategies to practise safely
- Employment, HR and staffing issues
- Business continuity and support
- Practice posters and social media tiles
- Links to mental health support



Advocacy updates

❑ GlassesSA changes – effective immediately

- Free standard glasses for eligible Aboriginal people
- Optional upgrades
- GlassesSA contribution of \$50 for children towards optional upgrade frames
- Thinner lenses for standard glasses with GlassesSA contribution of \$50
- More information: www.sa.gov.au/concessions/GlassesSA

❑ Hospital referral pathways (Vic and SA)

- Behind the scenes work with Optometry Australia
- Will update members as information is available

Member resources

☐ e-Wink monthly newsletter

☐ *Scope* will be electronic only for next twelve months due to budget limitations

☐ Updated Locum Guide

[www.optometry.org.au/
practice-professional-support/
career-employment/working-as-a-locum/](http://www.optometry.org.au/practice-professional-support/career-employment/working-as-a-locum/)

☐ Ophthalmology Directory



The banner features the Optometry Victoria South Australia logo on the left. The text reads "e-Wink" in large white font, followed by "The member-only online newsletter of OV/SA" in a smaller white font.



Member guide for locum optometrists
Updated 6 April 2020

Special note: While every effort has been made to ensure this information is accurate, current and complete, it is general in nature and must not be treated as advice, legal or otherwise, because errors and omissions can occur. Before you take any action or make a decision on the basis of this Guide, you should seek professional advice specific to your situation. Remember that your Optometry Victoria/South Australia membership includes free access to confidential legal advice.

© Optometry Victoria South Australia 2020



The cover of the "scope" magazine features the title in a large, light blue font. Below the title, it says "MAGAZINE OF OPTOMETRY VICTORIA SOUTH AUSTRALIA" and "MAY/JUNE | 2020". The main image shows a laptop screen displaying a video conference with five participants. A red banner at the bottom left says "WHAT'S INSIDE". Below that, the text reads "STRANGE DAYS: MEMBERS ADAPT TO COVID-19" and "FULL STORY PAGES 7 AND 8".

02/03
Membership fees halved for 2020-21

05
Back to the future for Golf Day winner Malcolm Gin

06
Five ECOI step up and join the ECOV/SA committee



Upcoming CPD events

- ❑ **ECOV/SA presents Back to Basics: AMD**
3 August – SA and VIC

- Guest presenter Zhichao Wu

- ❑ **One day mini-conference October – Vic**

- Details available soon

- ❑ **Blue Sky Congress November – registration opens soon!**



20 - 21 NOVEMBER 2020
ADELAIDE CONVENTION CENTRE

Membership renewal 2020-21

- 50 per cent discount on fees
- Pay now or pay later
- Instalment payment options (now or later)
- Questions? Contact the office



Contact us



www.optometry.org.au



03 9652 9100



office.vicsa@optometry.org.au



Like us on
Facebook

Optometry Victoria South Australia



Ms Jacqui Warren



Dr Sudha Cugati



Mr Ben Hamlyn

Close, evaluation and assessment

- Two weeks to complete assessment
- Slides, recording on the website
- We will email you with a link to the webpage
- Please complete the evaluation form
- Thank you!